

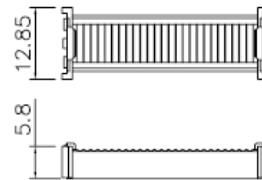
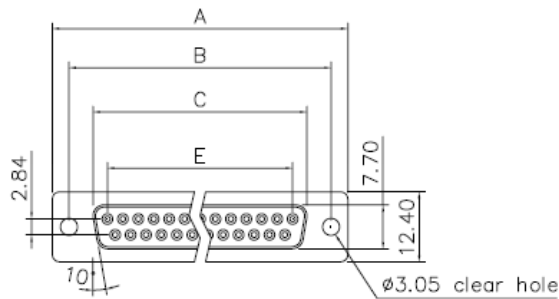
## D-SUB CONNECTOR, IDC TYPE, FEMALE, STRAIGHT, WITHOUT SCREW

### Material

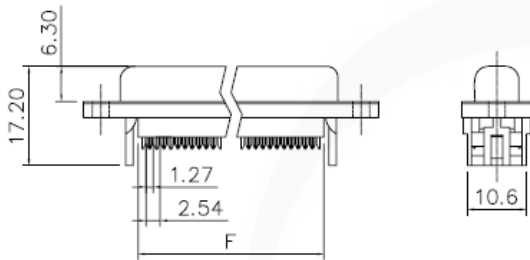
Insulator: Glass-Filled Thermoplastic PBT, UL94V-0  
 Contact: Copper Alloy

### Electrical

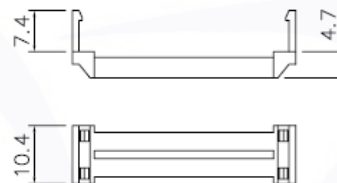
Contact Resistance: 20 milliohms, Max at 1 AMP DC.  
 Insulation Resistance: 1000, magohms at 500V DC  
 Dielectric Withstanding Voltage: 1000V AC/rms 60Hz for 1 minute  
 Current Rating: 3.0 AMP  
 Volatge Rating: 250V AC/rms 60Hz



Cover



With Insulator Support



Strain Relief

### Dimensions

Positions	A	B	C	E	F
9	30.50	25.00	16.00	11.08	10.16
15	39.00	33.32	24.27	19.39	17.78
25	53.08	47.04	38.22	33.24	30.48
37	69.40	63.50	54.65	49.86	52.06

Series-	Type-	NO. Pins-	Angle-	Screw-	Color-	Plating-	Packing-	Option-	Status-
DBF- (Female)	2- [3] IDC TYPE	9	[S] 180°	[0] W/O	[0] BLACK	[T1] SELECTIVE GOLD PLATED 1u"	[G] BAG		[R]RoHS
		15		[1] LOCKED	[4] BLUE	[T15] SELECTIVE GOLD PLATED 15u"	[X] BOX		
		25		[2] UNLOCKED			[R] REEL		
		37					[U] TUBE		
		50					[Y] TRAY		