

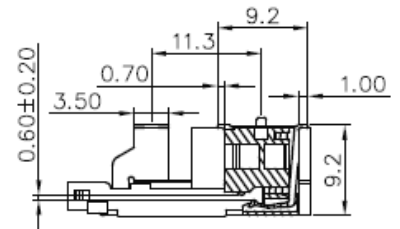
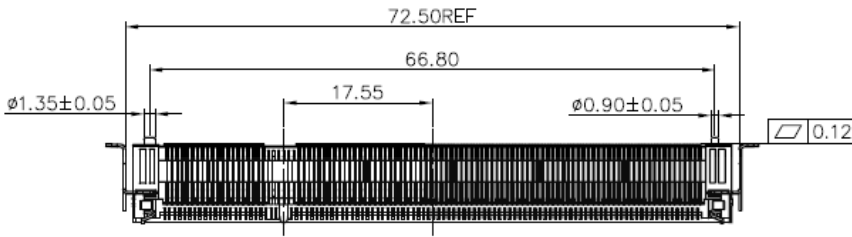
DDR II S.O. DIMM SOCKET 0.6mm PITCH, 200 PINS, 9.2 HEIGHT, STANDARD

Material

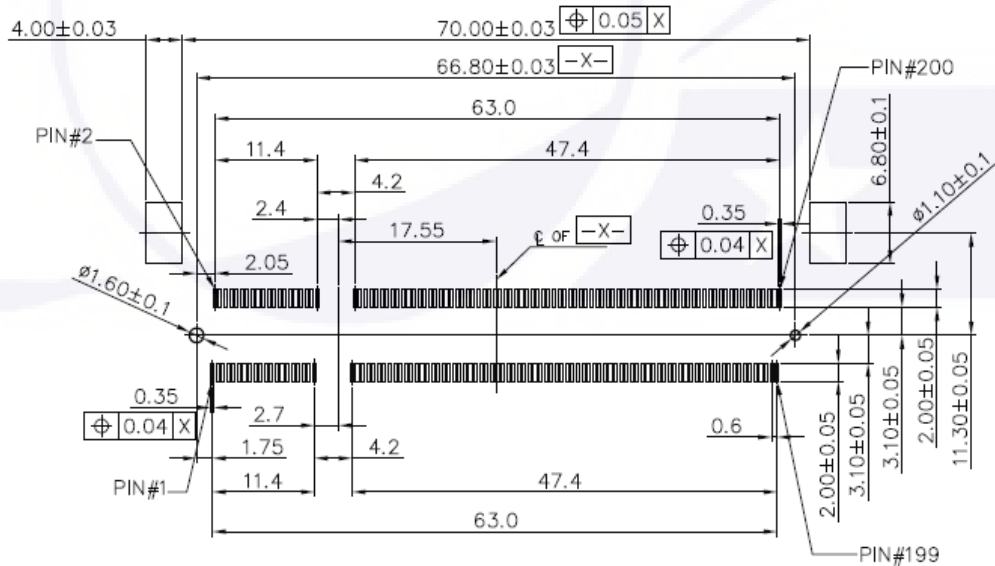
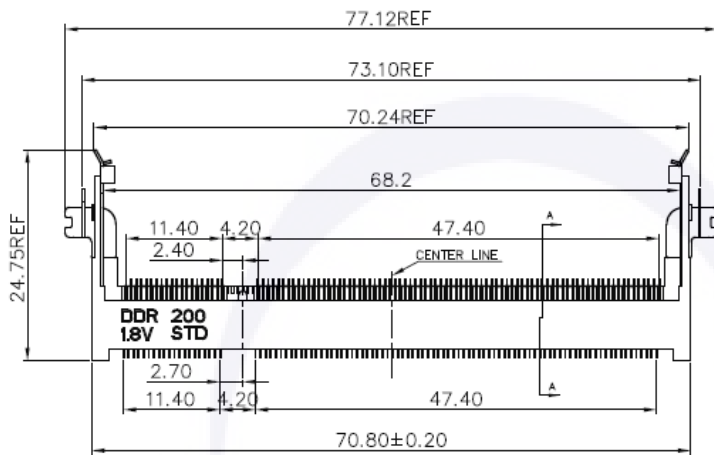
Housing: High Temperature Thermo Plastic (LCP), UL94V-0
 Contact : Brass
 Latch: SUS
 Solder: SPCC, All over Nickel and Tin plating

Finish

Contact Area: Gold Flash (1u" min), all over 50u" Nickel
 Solder Area: Gold Flash(1u" min) plating



SECTION A-A



RECOMMENDED PCB LAYOUT
 CONNECTOR MOUNTING SIDE

Series-	Type	Height	Voltage	COLOR	PLATING
S200-	[S] STANDARD	[2] 9.2	[1] 1.8V	[11] IVORY	[G1] FULL GOLD PLATED 1u"