

PIN HEADER, HEIGHT 2.54, PITCH 2.54, ROW SPACE 2.54, DUAL ROWS, STRAIGHT, DIP, CONTACT 6.00, TAIL 3.00

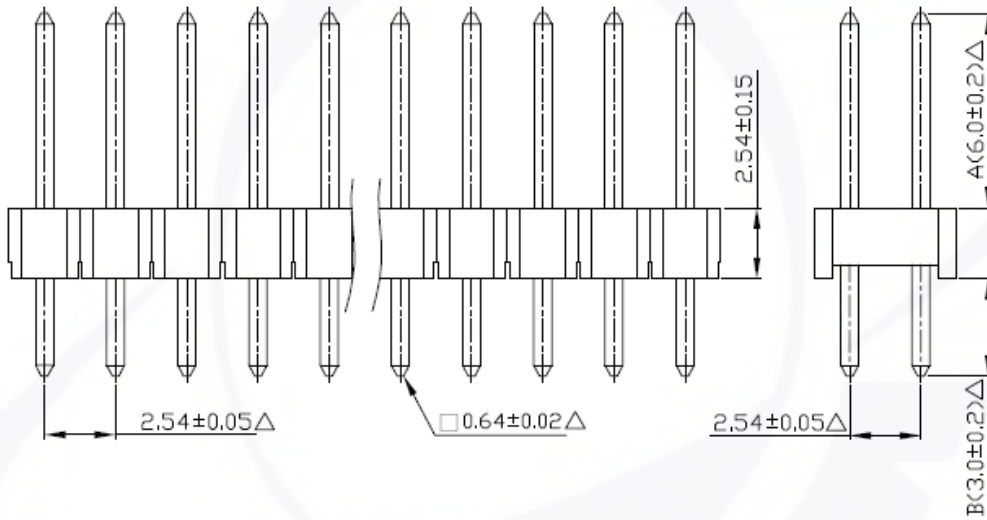
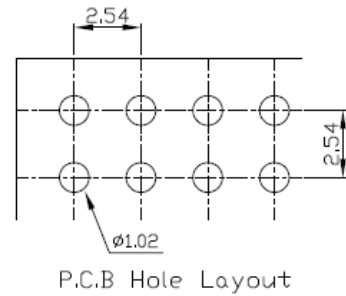
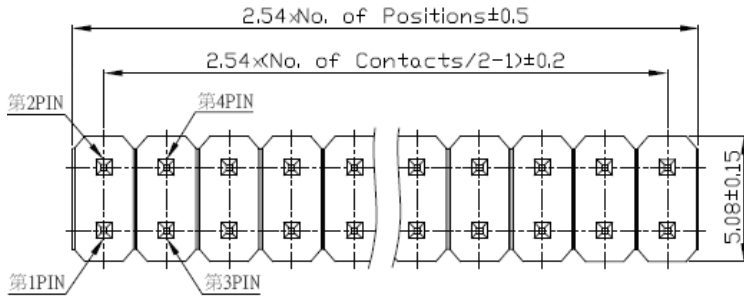
Material

Contact: Copper Alloy
 Insulator: Polyester, UL 94V-0

Plating: Gold Flash all over

Electrical

Current Rating: 3AMP
 Insulation Resistance: 5000M ohms Min.
 Withstanding Voltage: 1000V AC
 Operating Temperature: -40°C ~ +105°C



Series	Pitch	Row	Post	Cap	Plating	Plastic Height	Pin Length	Option	N0. Pins
P1S-	[4] 2.54	[4] 2.54	[0] W/O	[0] W/O	[G1] FULL GOLD PLATED 1u" [G15] FULL GOLD PLATED 15u"	254	-060030 (A / B)		2X_