

# eSATA CONNECTOR, 7 PINS, MALE, DIP, STRAIGHT

## Material

Housing: LCP( Black), UL 94V-0 Rated  
 Contact: Brass  
 Plating: Gold plating over Nickel on contact area  
 Tin plating on solder tail.

## Mechanical

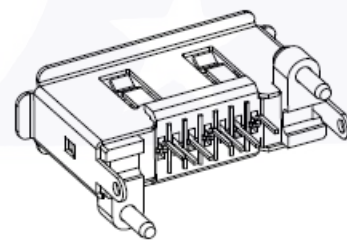
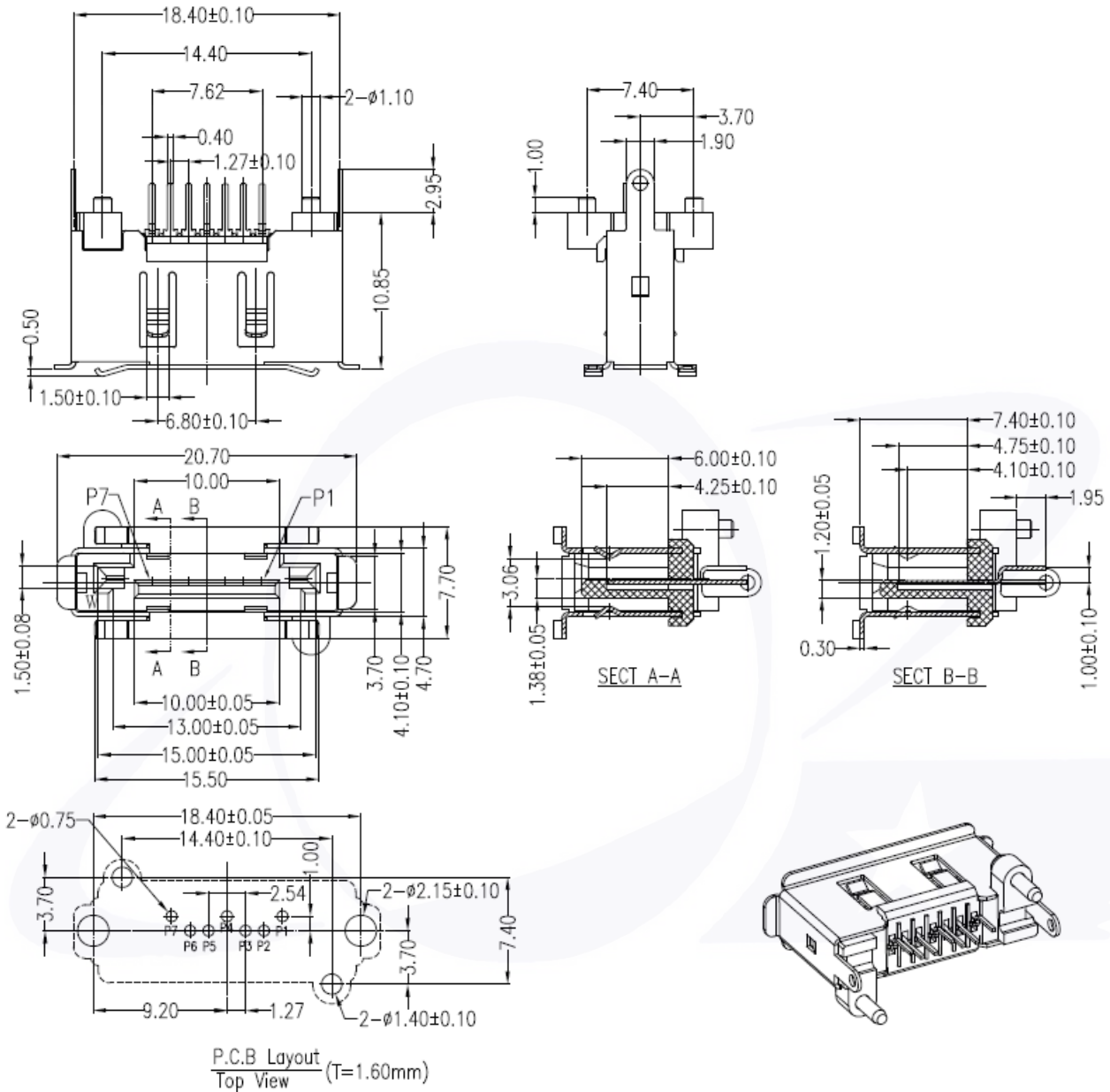
Insertion Force: 4080g Max.  
 Withdrawal Force: 1020g Min.  
 Durability: 2500 cycles.

## Electrical

Operation Voltage: 100 VAC Max.  
 Current Rating: 1.5 Amp per contact.  
 Contact Resistance: 30m ohm Min.  
 Insulation Resistance: 1000M ohm Min.  
 Dielectric Withstanding Voltage: 500VAC

## Environmental

Operating Temperature: -55°C to +125°C



Series-	NO. of Contact	Type	Solder/ Contact Type	Angle	Contact Plating	Contact Material	Insulator Color	Packing	Option	Status-
EATA-	1-	07 [M] Male	[D] DIP	[S] Straight	[T15] Selective Gold 15u"	[B] Brass	[0] Black	[R] Reel [U] Tube		[R]RoHS