

## SIM CARD HOLDER WITH SWITCH 6 PINS

### General Characteristics

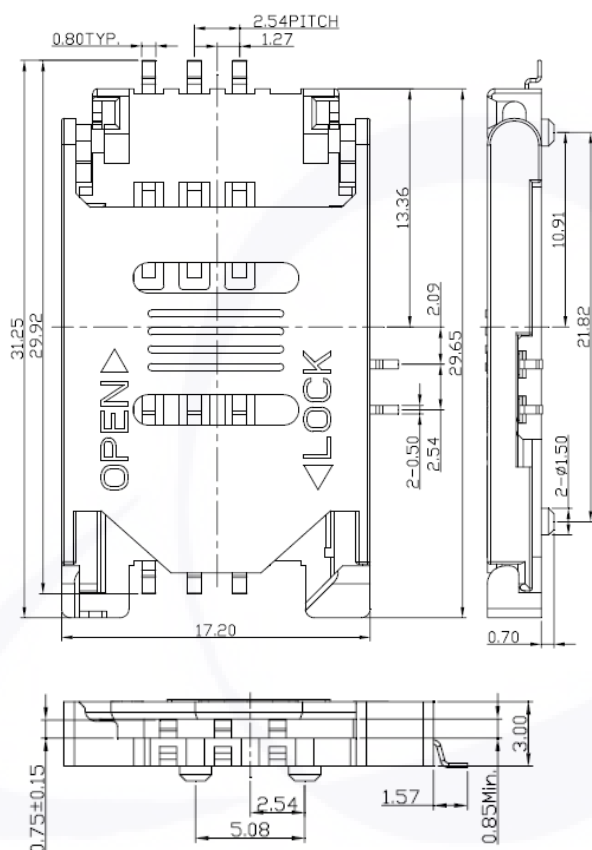
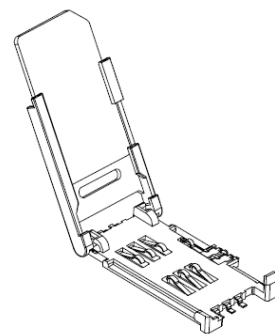
Dimension: 29.65L X 17.20W X 3.00H mm  
 Weight: Approx. 1.40g  
 Contact principle: Friction technology  
 Operating position: Shaft up/ Down / Horizontal  
 Mounting System: SMT Type (post optional)  
 Durability: 10,000 cycles min.

### Electrical

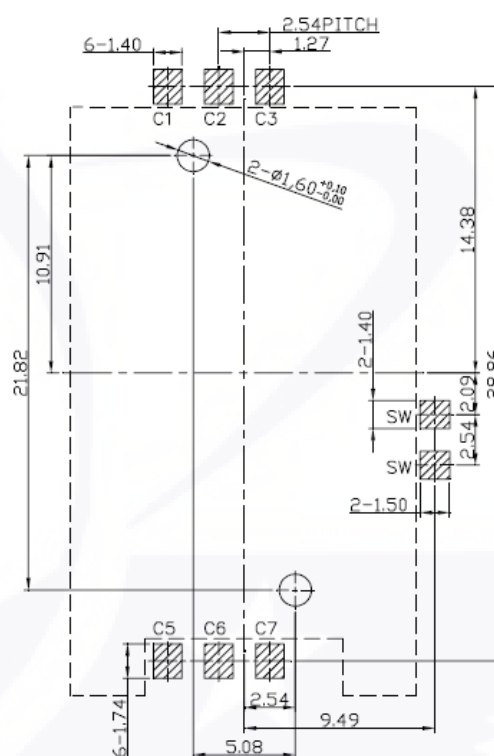
Number of contacts: 6, 8 pins (optional)  
 Contact resistance: 50m ohms typical, 100 m ohms max  
 Insulation resistance: > 1000 M ohms/ 500 VDC  
 Switch Type: Blade  
 Operation: Normally Open

### Mechanical

Insulation material: Thermoplastic, UL 94V-0  
 RoHS Directive 2002/95/EC Compliant



Unit: mm; Tolerances:  $\pm 0.15$  mm  
**Mechanical outline dimension**



Unit: mm; Tolerances:  $\pm 0.05$  mm  
**Reference dimension for PCB layout**

Series NO.	Free Code	NO. of Pos.	Contact	Packing	Status
SIM-	1-	06	[2] SMT	[R] Reel	[R] RoHS