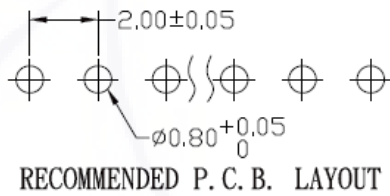
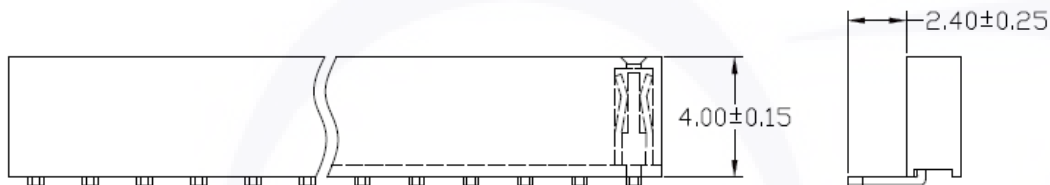
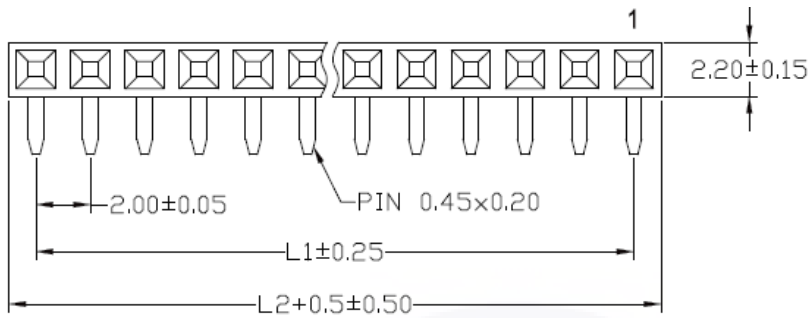


FEMALE HEADER RIGHT ANGLE HEIGHT 4.00 PITCH 2.00 SINGLE ROW (CONTACT 2.40)
Material and Finish

Insulator Material: High Temperature Thermoplastic + Glass Fibre UL94V-0
 Color: Black
 Contact: Phosphor Bronze
 Plating: Gold, Tin or Duplex plated
 Standard: Gold flash all over
 Duplex plated: Gold plated on contact area
 Tin on solder area

Electrical

Current Rating: 2 AMP
 Insulation Resistance: 1000M ohms Min.
 Contact Resistance: 20m ohms Max.
 Dielectric Withstanding: AC 500V/minute.
 Operating Temperature: -40°C ~ +105°C



Cir- cuits	Dimension mm	
	L1	L2
2	2.00	4.00
3	4.00	6.00
4	6.00	8.00
5	8.00	10.00
6	10.00	12.00
7	12.00	14.00
8	14.00	16.00
9	16.00	18.00
10	18.00	20.00
11	20.00	22.00
12	22.00	24.00
13	24.00	26.00
14	26.00	28.00
15	28.00	30.00
16	30.00	32.00
17	32.00	34.00
18	34.00	36.00
19	36.00	38.00
20	38.00	40.00
21	40.00	42.00
22	42.00	44.00
23	44.00	46.00
24	46.00	48.00
25	48.00	50.00

Series	Pitch	Post	Plating	Plastic Height	Contact	Option	NO. Pins Per Row
FR- (RIGHT ANGLE)	1- [3] 2.00	[0] W/O	[G1] FULL GOLD PLATED 1u" [G15] FULL GOLD PLATED 15u"	400	240		1x_