

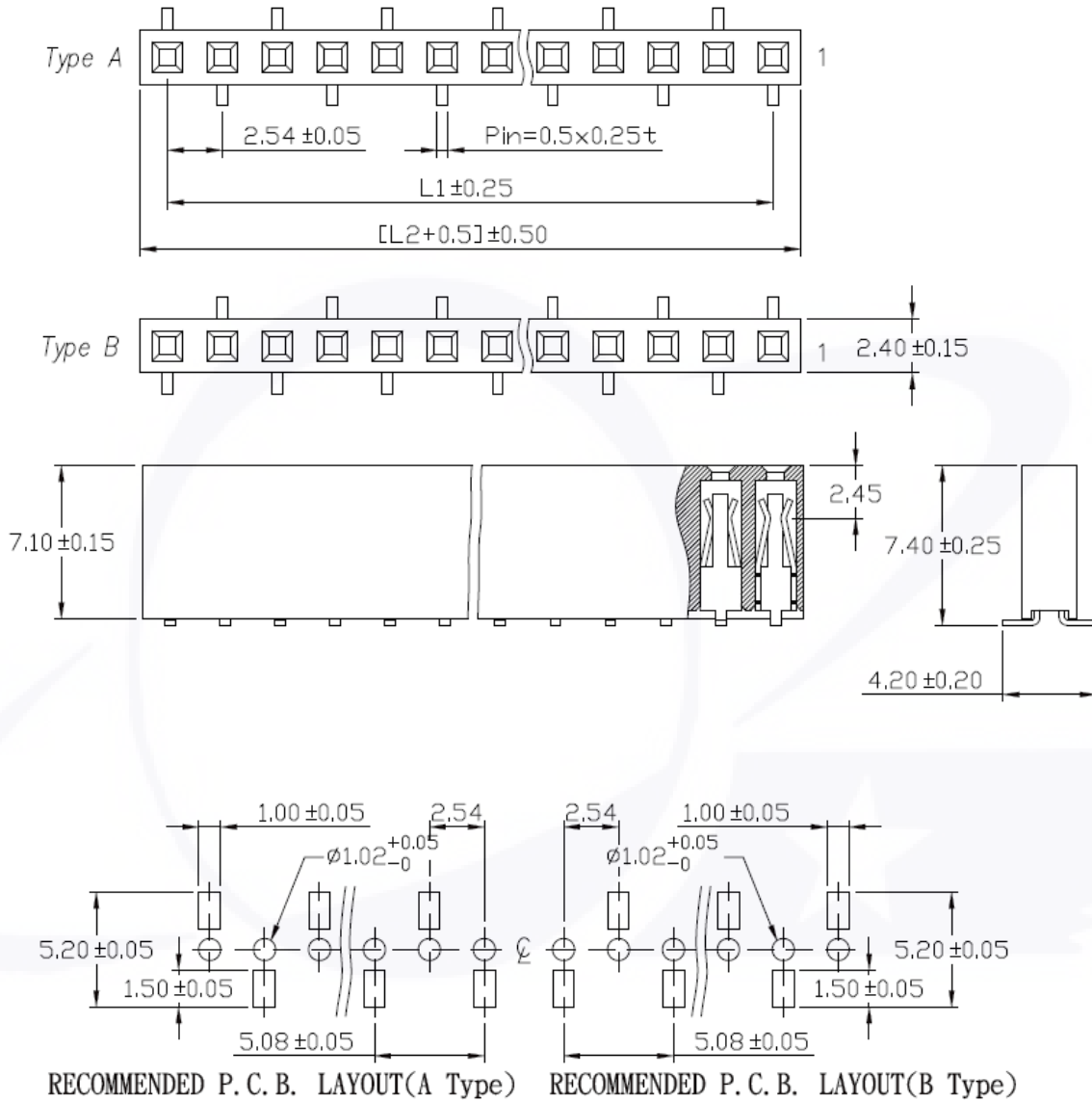
FEMALE HEADER SMT HEIGHT 7.10 PITCH 2.54 SINGLE ROW (LAYOUT 5.20)

Material and Finish

Insulator Material: High Temperature Thermoplastic + Glass Fibre UL94V-0
 Color: Black
 Contact: Phosphor Bronze
 Plating: Gold, Tin or Duplex plated
 Standard: Gold flash all over
 Duplex plated: Gold plated on contact area
 Tin on solder area

Electrical

Current Rating: 3 AMP
 Insulation Resistance: 5000M ohms Min.
 Contact Resistance: 20m ohms Max.
 Dielectric Withstanding: AC 500V/minute.
 Operating Temperature: -40°C ~ +105°C



Series	Pitch	Post	Plating	Plastic Height	Layout	Option	N0. Pins
FM- (SMT)	1- [4] 2.54	[0] W/O	[G1] FULL GOLD PLATED 1u* [G15] FULL GOLD PLATED 15u*	710	520	[A] A TYPE [B] B TYPE	1x_